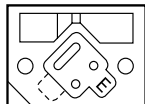
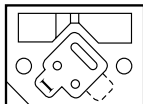


FEATURES

- Unit can be mounted individually or joined together by using diabolos with sunken locking screws
- Valves are fitted with pilot seals, which means that valves can be adapted to: internal supply (mark I) or external supply (mark E).



GENERAL

Fluid	Air or neutral gas, filtered, lubricated or not
Operating pressure	2 to 10 bar
Pilot pressure	With external supply, the pilot pressure must be equal or superior to the pressure in the valve
Ambient temperature	-10°C to +60°C
Flow (Qv at 6 bar)	See "specifications"

CONSTRUCTION

Body	Zinc diecast
Poppet	Aluminium
Seals	NBR (nitrile)

ELECTRICAL CHARACTERISTICS

pilot	voltage		consumption		insulation class	degree of protection	electrical connection
	~	=	inrush	hold			
series 189	~	24V-48V-115V-230V/50Hz	6 VA	3,5 VA (2,5 W)	F	IP 65	spade plug size 22 connector DIN 43650, 11 mm, industry standard B, rotatable x 180°
	=	24V-48V	2,5 W				

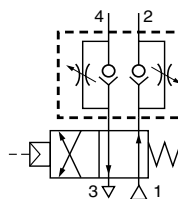
SPECIFICATIONS

symbol	pipe size	orifice size (mm)	flow		fluid pressure (bar)		2 catalogue numbers			
			at 6 bar l/min (ANR)	Kv coefficient	min	max.	valve	+	pilot (~ / =)	(M)
	ports 2-4 with instant fittings ports 1-3: G1/8	3	210	3	2	10	26390005	+	18900001	●
	tapped G1/8	3	210	3	2	10	26390002	+	18900001	●
	tapped G1/4	6	840	12	2	10	26490026	+	18900001	●

(M) Type of manual operator on pilot(s) : ● : maintained

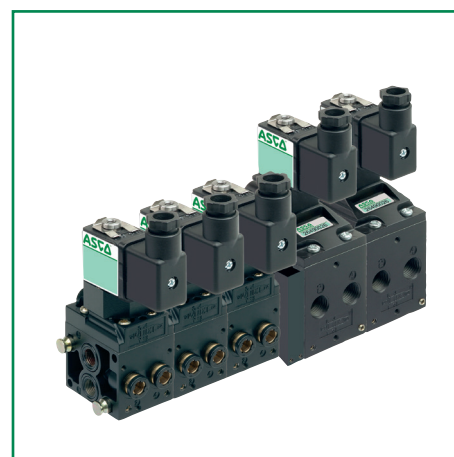
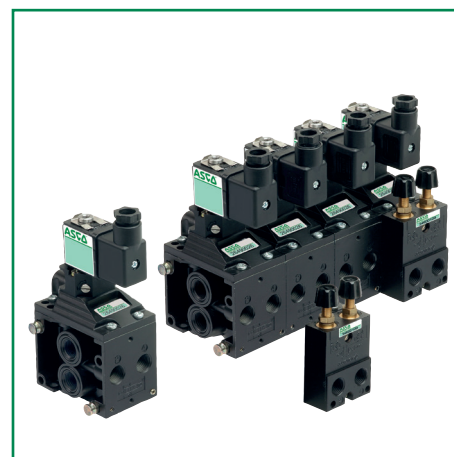
ACCESSORIES

- Unit consisting of 2 flow regulators, joinable
 - for valve 263 (instant fittings \varnothing 6 mm) - cat. no.: **34600211**
 - for valve 263 (G 1/8) - cat. no.: **34600209**
 - for valve 264 (G 1/4) - cat. no.: **34600109**
- Transfer unit for association of valves series 263 and 264, allowing communication of pressure feed (1) and exhaust (3) ports (18 mm thick). - cat. no.: **88126303**
- Power supply unit separate from main pressure
 - for valve 263 (G 1/8) - cat. no.: **88126301**
- The valves series 263 can be mounted on EN 50022 - AFNOR NF C63015 rail using mounting clips.
 - 10 clips - cat. no.: **33400036**



OPTIONS

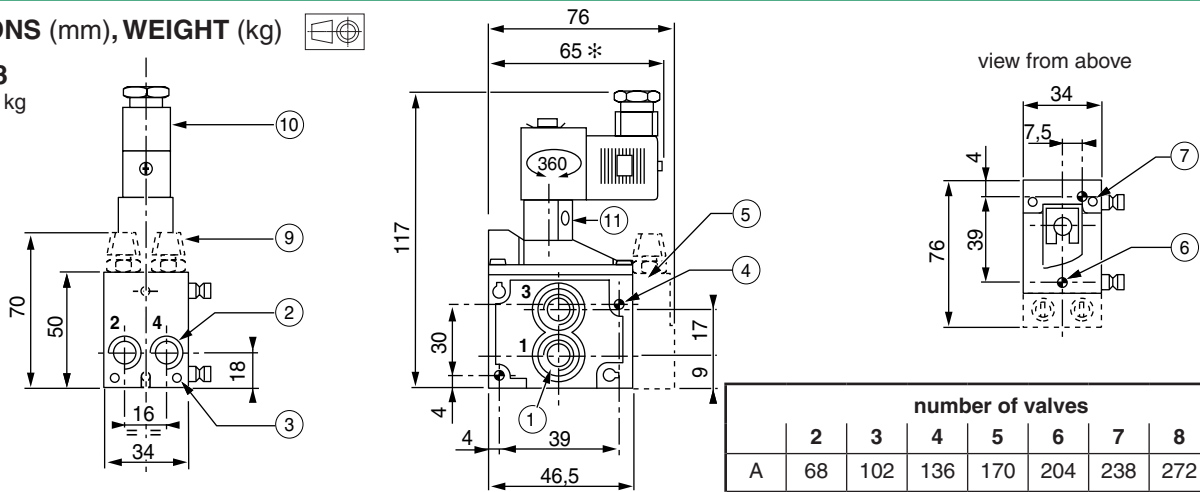
- For equipment and pilot valves for use in potentially **explosive atmospheres** caused by dusts or gases, in accordance with ATEX Directive 2014/34/EU.



Pneumatic Valves (4/2) - 21

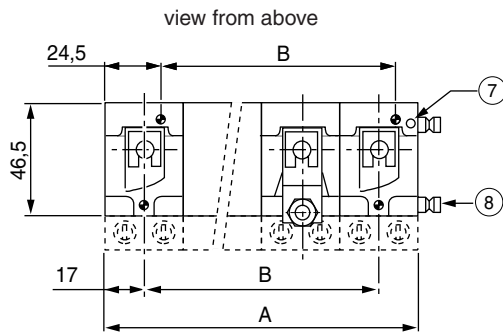
DIMENSIONS (mm), WEIGHT (kg)

VALVE 263
weight: 0,450 kg



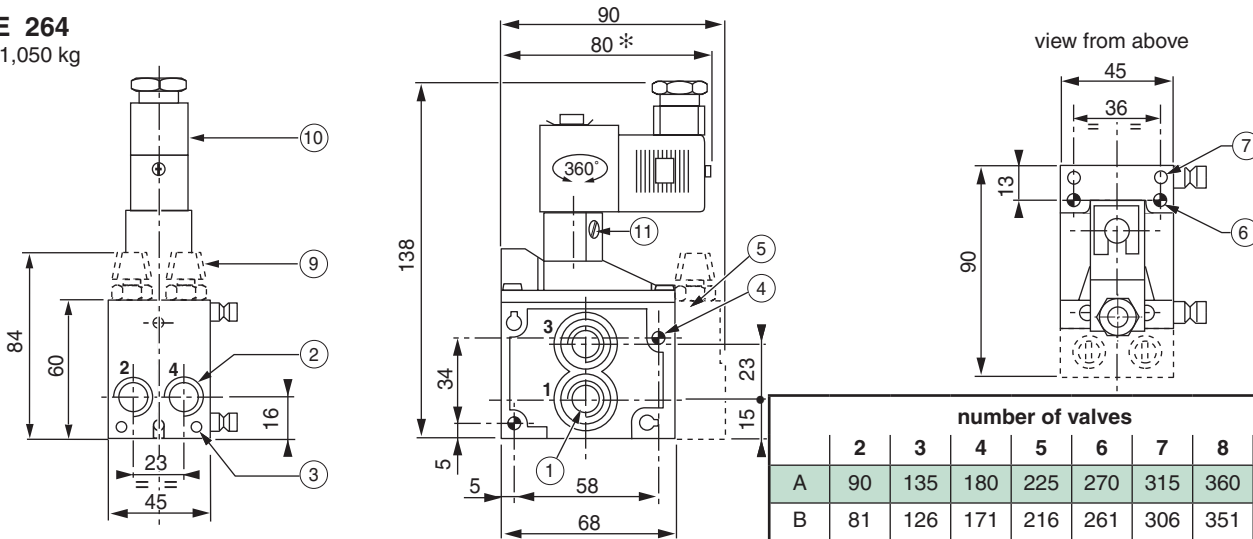
	number of valves							
	2	3	4	5	6	7	8	+ 1
A	68	102	136	170	204	238	272	+ 34
B	34	68	102	136	170	204	238	+ 34

Joinable valves



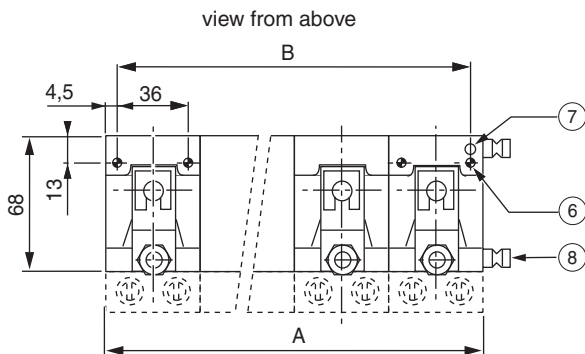
- ① 4 ports G 1/8
- Valve supplied with 1 plug on orifices 1 and 3 seal joints**
- ② 2 ports G 1/8 or instant fittings Ø 6 OD
- ③ 2 grub screws for joining spindles
- ④ 2 screws for side mounting Ø 4,2 x 34
- ⑤ Accessory : Flow regulator
- ⑥ Top mounting 2 holes Ø 4,2 x 50
- ⑦ 2 grub screws for joining spindles
- ⑧ Joining spindles
- ⑨ Flow rate adjustment buttons
- ⑩ Pilot series 189
- ⑪ Manual operator
- * +15 mm for plug removal

VALVE 264
weight: 1,050 kg



	number of valves							
	2	3	4	5	6	7	8	+ 1
A	90	135	180	225	270	315	360	+45
B	81	126	171	216	261	306	351	+45

Joinable valves



- ① 4 ports G 1/4
- Valve supplied with 1 plug on orifices 1 and 3 seal joints**
- ② 2 ports G 1/4
- ③ 2 grub screws for joining spindles
- ④ 2 screws for side mounting Ø 5,5 x 45
- ⑤ Accessory : Flow rate regulator
- ⑥ Top mounting 2 holes Ø 5,5 x 60
- ⑦ 2 grub screws for joining spindles
- ⑧ Joining spindles
- ⑨ Flow rate adjustment buttons
- ⑩ Pilot series 189
- ⑪ Manual operator
- * +15 mm for plug removal